

Industry-leading
3 YEAR
Structural
Warranty*

Terms & Conditions Apply.



Accessible Disabled Toilet

Portable Amenities - Practical, Durable, Cost-Effective

- ✓ Electric certification (AS3000 / AS3001.1)
- ✓ 3-year structural warranty
- ✓ WELS compliant fixtures and fittings
- ✓ Designed for Australian conditions

The Accessible/Disabled Portable Toilet is the ideal solution for worksites, events, and remote locations where accessible restroom facilities are needed.

Designed for ease of use and full Australian compliance, this portable unit offers a spacious, fully enclosed toilet with easy access. It ensures comfort and privacy for users while meeting all modern Australian accessibility standards.

Key Features

Meets Australian Accessible Standards

Designed to meet Australian Accessible Standards, this portable unit includes a disabled-compliant toilet seat and other required accessible features.

Certified & Compliant

Fitted with WELS-rated and watermarked plumbing (AS/NZS 6400:2016) and certified for electrical compliance (AS3000 / AS3001.1).

Built Tough

Constructed with durable galvanised steel, this unit is engineered to handle demanding conditions.

Easy Transport & Setup

Equipped with 4 corner lifting lugs and forklift pockets for quick, straightforward transport and positioning.

Peace of Mind

Comes with a 3-year structural warranty to ensure long-term reliability.



Specifications

General

- Compliant to AS1428.1
- Engineered structure designed to N3 wind pressure
- Galvanized and epoxy painted steel (frame, roof, and wall panels)
- Internal waterproof wall lining
- 4 lifting lugs on top and a forklift pocket in the base frame
- Easy clean floor, walls and ceiling
- Vented, key lockable door with steel frame
- Double glazed operable window
- Through wall plumbing (model dependent)

WELS Compliance

- Compliance to AS3000 / AS3001
- Pre-installation electrical label of compliance (electrical certificate available on request)
- IP 66 rated Electrical Distribution Board for mains power connection (fitted externally)
- EDB fitted with 1 x 2 pole 10amp circuit breaker
- Australian compliant electrical cable pre-installed (SAA approved)
- Australian compliant fixtures; GPO's, exhaust fan, internal ceiling light/s and light switch/s

AS1428.1 Accessible Compliant Features

- Toilet braille tactile sign
- Hand basin, taps with lever handles and mirror
- Disabled toilet suite with backrest and blue contrast seat
- Back and side grabrails / handrails
- Toilet paper holder
- Soap dispenser
- Paper towel dispenser
- Clothes hook
- Shelf
- Door lock with latch / indicator bolt
- 875mm clear door opening width (850 min req.)
- Circulation space to AS1428Fit out compliant to AS1428
- Optional baby change table available²

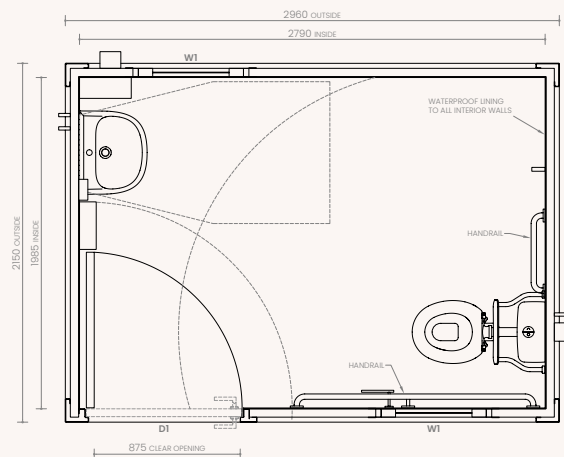
Plumbing

- Pre-installed brass water inlets (hot and cold) and toilet waste outlet
- All fixtures are WELS rated and Watermarked (AS/NZS 6400:2016 compliant)
- Hand basin mixer tap: WELS 5 Star, 6.0L/min
- Pop up waste
- Combination S & P trap

Council Compliant

- Form 15 Structural Certificate to N3 (n/a for Northern Territory)²
- Form 12 or 16 Electrical certificate to AS3000 / AS3001
- Detailed floor, plumbing, electrical, and elevation plans
- WELS and Watermarked compliant fixtures (certificates available on request)¹
- Engineer footing design²
- Final connections by customer³


1. Available on request 2. Optional, charges apply 3. Supply only



Dimensions	Width	Length	Area
Total Internal	1.98m	2.79m	5.53m ²
Total External	2.15m	2.96m	6.63m ²

 mylittlehouse.com.au

 contact@mylittlehouse.com.au

 1300 046 273



Scan to learn more about this product online

