



OASIS MOBILE

1-4 1 1 38

Open plan or 1-4 Rooms, 20ft with Trailer

Immerse yourself in the ultimate luxury of **Oasis Mobile**. This relocatable tiny space is meticulously crafted to perfection, featuring a generously spacious kitchen, a comfortable bathroom, and an array of premium enhancements.

Key Features

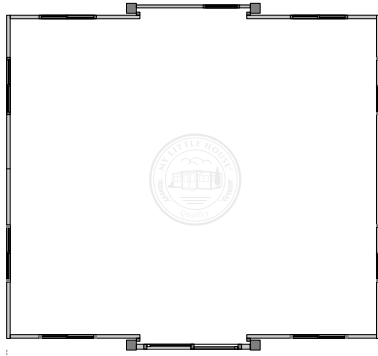
- Strong thermally insulated walls and roofs
- Easy Set-up
- ADR Compliant Trailer
- Australian Compliant electrical
- Double glazed insulated windows and doors
- Strong Steel Structure
- Kitchen, Air Conditioner, or Cladding options available
- 3 Year Warranty*
*Terms & conditions apply

Closed Length 5850mm
Closed Width 5900mm

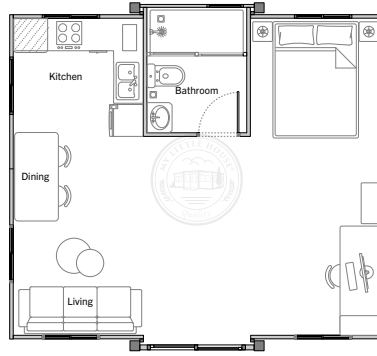
Open Length 6420mm
Open Width 5900mm

Height 2550mm
Area 38m²

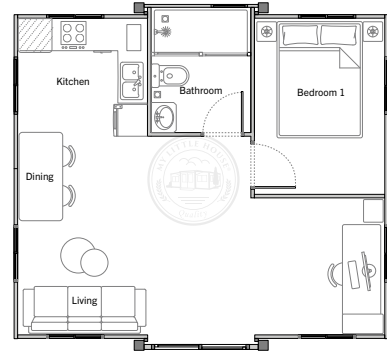
Standard Open Plan Design



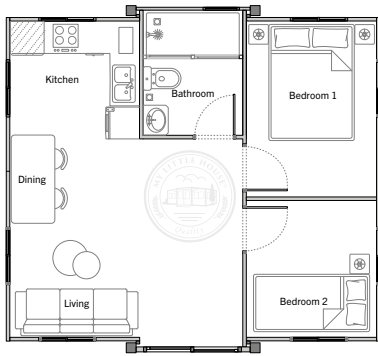
Standard Open Plan with Bathroom & Kitchen Design



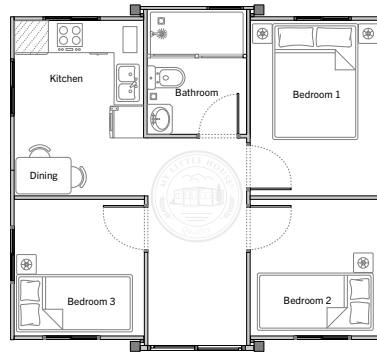
1 Room with Bathroom & Kitchen Design



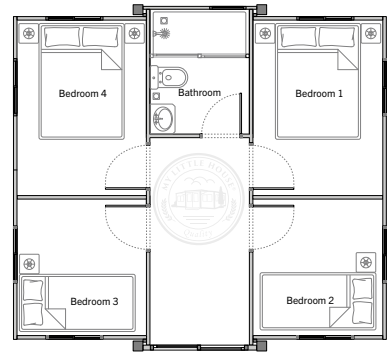
2 Room with Bathroom & Kitchen Design



3 Room with Bathroom & Kitchen Design



4 Room with Bathroom Design



For illustration purposes only. Contact our Sales Representatives for full list of inclusions.

Specifications

ADR TRAILER

- Tri axle trailer supplied to the Australian Design Rules and ready for registration (registration not included as it varies from state to state).

FLOOR STRUCTURE AND FLOORING

- Strong reinforced steel floor external structure.
- Water and pest proof engineered hard floor installed over steel structure.
- Commercial-grade luxury vinyl flooring over hard floor.

ROOF STRUCTURE AND FINISH

- Centre section: Galvanised steel sheeting roof, finished with a zinc rich primer and protective paint. Thermally insulated with Glass wool between top and bottom steel sheets.
- Side roof sections: Thermally insulated expanded polystyrene panels with galvanised steel skin panels finished with protective paint.

FRAME AND WALLS

- External steel frames: Finished with a zinc rich primer and protective paint.
- Walls: Thermally insulated expanded polystyrene panels with galvanised steel skin panels finished with protective paint.

WINDOWS & DOORS

- Black powder-coated, lockable windows and doors.
- Double-glazed for improved thermal and acoustic insulation.
- Insect screens are supplied for all windows.

POWER AND LIGHTING

- All electrical items comply to Australian Standards (AS3001).
- Light and power cable, switches and power points installed.
- EDB (Electrical Distribution Board) installed and wired for air conditioning.
- Mains Power connection point located to the rear of the cottage.
- LED Light fixtures supplied.

AIR CONDITIONER (optional)

- We have selected the perfect match for your tiny space, with enough power but very economical to keep you warm in winter and cool in summer without blowing the budget.

L SHAPED KITCHEN (optional for Open Plan design)

- Our cleverly designed and feature packed L-Shape kitchen has the perfect balance of space and style.
- Includes: Stone quartz benchtop, Stainless steel single sink with dish drain area, WELS Compliant mixer, Overhead cupboards.