



SUCASA RESORT

BROCHURE & PROCESS GUIDE

INTRODUCTION





INTRODUCTION

YOUR HOME AWAITS

Why did we choose the name SUCASA®? It's simple – the name reflects our commitment to you. Derived from Spanish, "Sucasa" translates to "your home." We've drawn from over 60 years of combined experience in the construction industry and our long-standing success with My Little House to create a range of modular, Australian-made tiny homes. It's more than just a house – it's a space designed with you in mind. We believe that a home should be personal, comfortable, and perfectly suited to your needs, which is why we've taken the utmost care to create a range of tiny homes that feel like **your** home, right from the moment you step inside.



Resort Premium - 1 Bedroom

WHY SUCASA?

Our journey to create SUCASA® began with a clear vision: to address the pressing demand for flexible, high-quality homes that can be easily adapted to Australian conditions. After years of importing and selling tiny homes, we recognised the need to develop a product that not only meets local requirements but also responds to the unique needs of Australians. That's why every SUCASA® home is proudly made right here in Australia, designed for our environment, and created to offer an “out of the box” solution to the current housing challenges.

EXPERT-DRIVEN DESIGN, TAILORED FOR AUSTRALIA

We didn't do this alone. The SUCASA® range was crafted in collaboration with leading industry experts – including interior designers, builders, and certifiers – and, most importantly, with input from our existing customers. This collaboration has allowed us to deliver a product that is both functional and stylish. Each SUCASA® home is designed to be modern, comfortable, and suited to a variety of lifestyles, all while maintaining affordability and high standards of quality.



Resort Premium - Bedroom

FLEXIBLE SOLUTIONS FOR PERSONAL & COMMERCIAL USE

The SUCASA® range is built for both commercial and personal applications. Whether you're looking for a primary or secondary dwelling for yourself or family members, seeking to generate extra income with a granny flat, a developer aiming to increase rental returns, or a resort or caravan park expanding accommodation options, the SUCASA® range offers a fast, efficient, and high-quality solution. No matter your needs, our friendly team is here to understand your requirements and help to find the right solution for you.

A MESSAGE FROM THE HEAD DESIGNER

Drawing on years of experience and close collaboration with industry experts, I've had the privilege of bringing my ideas to life in the form of modern, sustainable, and practical homes. Our goal was to create spaces that aren't just built for living, but built for you. I'm proud of what we've accomplished and confident that SUCASA® will provide the perfect foundation for your next chapter.

This brochure will guide you through every step of your journey with SUCASA®, ensuring you have a clear understanding of the process from start to finish. We can't wait to begin this exciting journey with you!



Greg Bloom
Owner & Head Designer



OVERVIEW



HOW IT WORKS

01 UNDERSTANDING YOUR NEEDS & SITE DISCOVERY

The journey begins with understanding which product from the SUCASA® range best suits your needs. One of our friendly Sales Representatives will guide you through this process, answering all your questions to ensure we find the perfect solution for you. At this stage, we'll also provide you with an indicative quote. Once you're confident in your choice, our team will connect you with one of our accredited (licensed) building partners to assist you in obtaining preliminary council approval that is specific to your site.*

**Although we recommend using one of our accredited building partners, you are welcome to use your own builder to complete the installation and assist with the relevant approvals.*

02 DESIGN & REVIEW

After securing preliminary council approval, our Sales Representative will provide an official quote tailored to your site-specific requirements. At this point, the accredited building partner will also offer a quote for the installation of your unit, as well as for any additional site-specific requirements you may have.

HOW IT WORKS

03 PRODUCTION

Upon accepting our quotation and making the initial deposit, production of your home will commence. During this time, your building partner will collaborate with you to complete any necessary preparations at your site, such as installing footings or connecting services to the required locations. You can expect your home to be ready within 10 to 12 weeks (unless otherwise advised).

04 DELIVERY & INSTALLATION

Once your home is complete, our logistics team will coordinate delivery to your site. After delivery, your building partner will handle the installation of your home, including service connections and any additional features you've chosen. The building partner will provide a timeline for the completion of this work.

PROCESS



PROCESS EXPLAINED & ADDITIONAL CONSIDERATIONS

UNDERSTANDING YOUR NEEDS & SITE DISCOVERY

Upon accepting our quotation and making the initial deposit, production of your home will commence. During this time, your building partner will collaborate with you to complete any necessary preparations at your site, such as installing footings or connecting services to the required locations.

THINGS TO CONSIDER

- **Indicative Quotes:** Any quote we provide before the site discovery is complete is only indicative and subject to change.
- **Sales Representatives vs. Builders:** Our Sales Representatives are available to answer any questions about our units. However, only our accredited builders can address site-specific queries or those related to permits and certifications.
- **Final Contract Price:** The final contract price will only be determined once all site discovery information is provided.
- **Site Discovery Costs:** There are costs associated with having a licensed builder conduct the site discovery, and these will be invoiced directly to you by the builder.
- **Installation Contract:** You will need to enter into a separate contract for the installation of our units directly with a licensed builder. The costs for this installation will also be invoiced directly to you by the builder.



DESIGN & REVIEW

All units in the SUCASA® range are sold 'off the plan.' However, if you choose to contract one of our accredited building partners, they can assist you with customisation options and additions, such as adding cabinetry in the bedroom or incorporating an additional deck or ramp. Your builder will also keep you informed of any site-specific requirements necessary to ensure that your installed unit complies with all relevant council legislation.

PRODUCTION

Once you have paid your deposit, our team will order the raw materials required for the construction of your new home. When all materials arrive at our factory, we will begin by erecting the frame and completing the 'rough in' of all services. After the rough-in is complete, we will send you photos of your build's progress or invite you to inspect it in person.

Please note that the next stage of construction will not commence until we receive your first progress payment. Our team will keep you updated on production progress with regular photo updates.



DELIVERY & INSTALLATION

Our team will arrange the necessary transportation and cranes to ensure your home arrives safely at your site. Prior to delivery, you will be required to make your final payment. If this payment is not received prior to the delivery date, your new home may be sent to an off-site storage location. In such cases, you may be responsible for additional transport and storage costs until the final payment is received.

Once your home is in position, your chosen builder will complete the final connections to services and any site-specific requirements as confirmed during the site discovery process.



WARRANTY



WARRANTY

Our team are committed to providing homes built to last, backed by two layers of protection for your peace of mind:

12 MONTH GENERAL WARRANTY:

For the first 12 months after delivery, we offer a general warranty covering non-structural items such as fittings, fixtures, and finishes. If any issues arise with these elements during this period, we'll address them to ensure your home meets the high standards we set.

6.5 YEAR STRUCTURAL WARRANTY

In line with Australian building regulations, all SUCASA® homes come with a 6.5 year structural warranty. This covers major structural components like the framing and roof. If a structural defect arises that affects the integrity of your home, we'll take care of the necessary repairs.

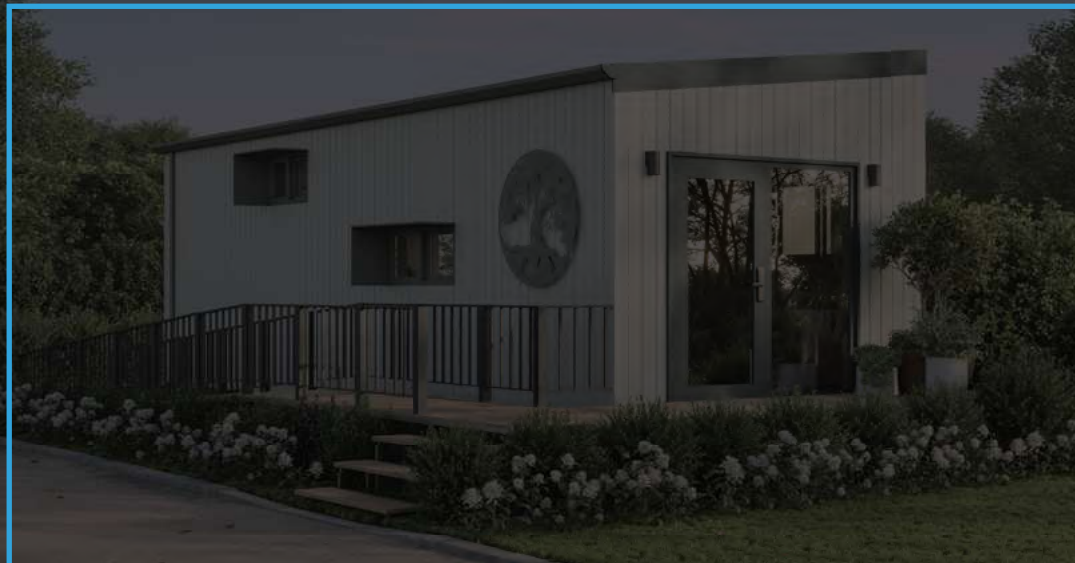
If you experience an issue within either warranty period, simply contact our team, and we'll arrange for an inspection and any necessary repairs to keep your SUCASA® home in top condition.

WHAT'S COVERED

- **12 Month General Warranty:** Covers non-structural elements such as doors, windows, fixtures, and appliances.
- **6.5 Year Structural Warranty:** Protects against major defects in the sub-floor, load-bearing walls, framing, and roof.

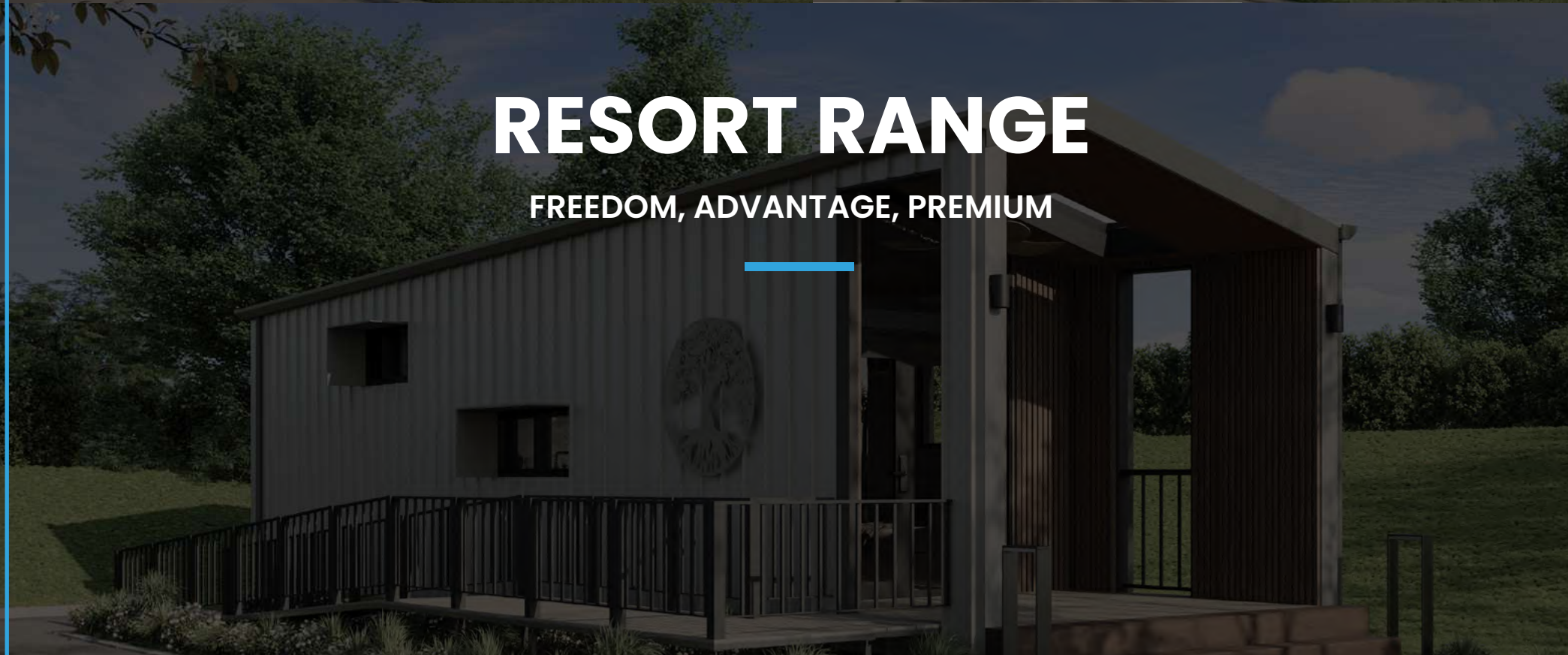
WHAT'S COVERED

- Normal wear and tear.
- Damage caused by external factors, such as natural disasters or improper maintenance.
- Damage caused during the installation process.



RESORT RANGE

FREEDOM, ADVANTAGE, PREMIUM



RESORT FREEDOM

Step into the SUCASA® Resort Freedom, the perfect entry point into the world of Class 1A tiny homes. Built on a robust cold formed steel frame, this sleek and modern design redefines what it means to downsize without compromise. Featuring a skillion roof and vertically grooved cladding, this home delivers style and durability in a contemporary package. Whether you're a first-home buyer, a property owner, or seeking extra space for loved ones, the SUCASA® Resort Freedom is the perfect fit.

At the heart of this 42 square-metre* home is an inviting open-plan living area, where high ceilings and strategically placed windows flood the space with natural light. At the centre of this thoughtful design is the L-shaped kitchen, where we've maximised every inch with smart storage solutions and space for all your essential appliances. Classic laminate benchtops, chrome tapware, and push-to-open cabinetry complete the SUCASA® Resort Freedom's modern, functional aesthetic.

The bathroom continues this practical approach, featuring a full-width shower, mirrored vanity with storage, and an integrated laundry area with space for both washer and dryer. The bedroom provides the perfect balance of comfort and space, with room for a queen-size bed, bedside tables, and ample opportunity to make the space your own.

The SUCASA® Resort Freedom is more than just a tiny home, it's a place where comfort, style, and functionality come together to create the perfect living experience. With thoughtful design and modern features, it's a home that feels like it was built just for you.

*Excludes XS Models



Resort Freedom - 1 Bedroom

FREEDOM INCLUSIONS & SPECIFICATIONS

GENERAL

- High-quality cold formed steel frame
- Designed to meet liveable housing design standards
- 7-star energy efficiency
- Off the plan design
- Factory built in Brisbane, Queensland

KITCHEN

- Soft close cabinet doors and drawers
- Integrated multi-function oven
- Slide out rangehood
- Tiled splashbacks
- Speckled snow laminate benchtop
- Countertop induction cooktop
- Chrome hardware

BEDROOM

- Open plan bedrooms
- Multiple conveniently placed power outlets
- White blade ceiling fan included

BATHROOM

- Step free shower with integrated flush shower drain
- Frameless glass shower screen
- Sliding barn door with privacy lock
- Ceiling extractor fan
- Wall hung storage cabinet with mirror
- Chrome hardware

FREEDOM INCLUSIONS & SPECIFICATIONS

LOUNGE

- Open plan design
- Provisions for wall mounted TV (bracing, power & antenna outlets)
- LED ceiling lights
- Premium hybrid timber look flooring
- Multiple conveniently placed power outlets
- White blade ceiling fan included

LAUNDRY

- Speckled snow laminate benchtop
- Soft close cabinet doors
- Stainless steel sink with chrome gooseneck mixer tap
- Washer and dryer ready

ELECTRICAL

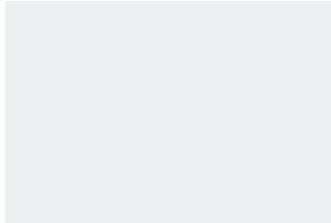
- Pre-wired by licenced electricians
- Interconnected smoke alarms
- LED ceiling lights
- Pre-wired coaxial cable (for wall mounted TV)
- Starlink® external rear power outlet

PATIO

Patio models only.

- Step free glass entry door
- White blade ceiling fan included
- Full-width hardwood stair entry

FREEDOM INTERNAL FINISHES



Walls: Dulux White on White



Laminate Benchtop: Speckled Snow



Kitchen Overhead Cabinetry: Maple Nut



Kitchen Base Cabinets: Blackberry



Timber Look Hybrid Flooring: Tassie Oak



Floor Tile: Bora Grey Marle



Wall Tile: Bora Ice White



Posh Tapware: Chrome



Ceiling Fan 1400mm DC Motor: White



Wall Hung Vanity & Mirror Cabinet: White

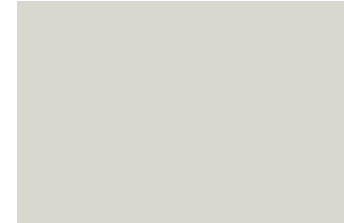


Standard Switches & Sockets: White

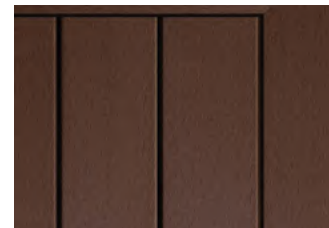
FREEDOM EXTERNAL FINISHES



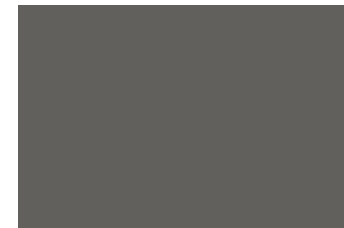
External Cladding: Vertically Grooved Fibre Cement Panels



External Cladding Colour: Surfmist®



Ekodeck Classic Decking - Dark Brown (Patio Only)



Windows & Hoods: Woodland Grey®



Fibre Cement Architectural Cladding: Woodland Grey® (Patio Only)

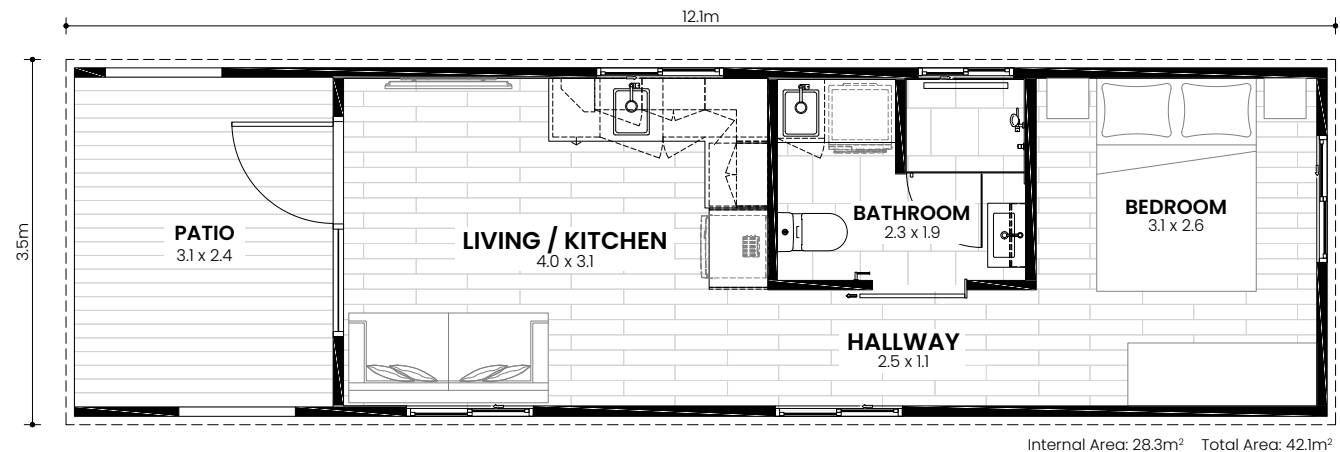


Trimdek Steel Roofing

FREEDOM FLOOR PLANS

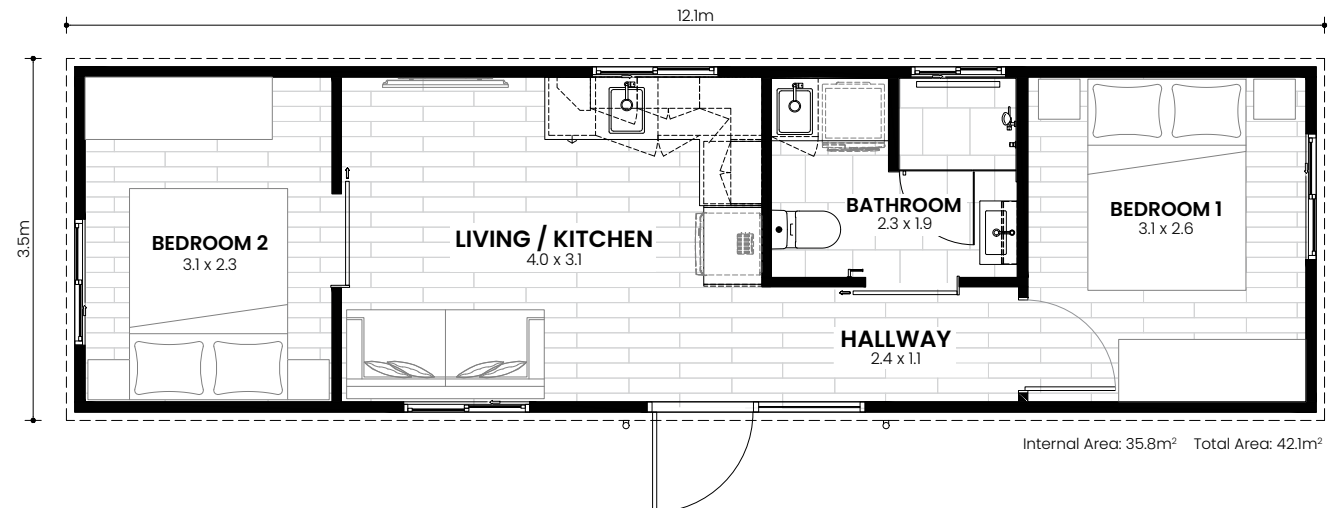
Resort Freedom

1 Bedroom



Resort Freedom

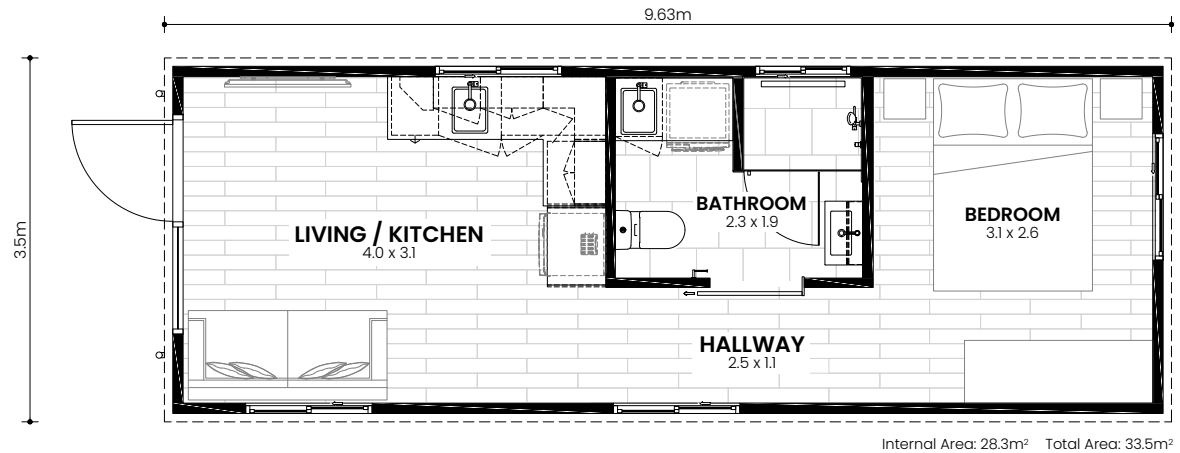
2 Bedroom



FREEDOM FLOOR PLANS

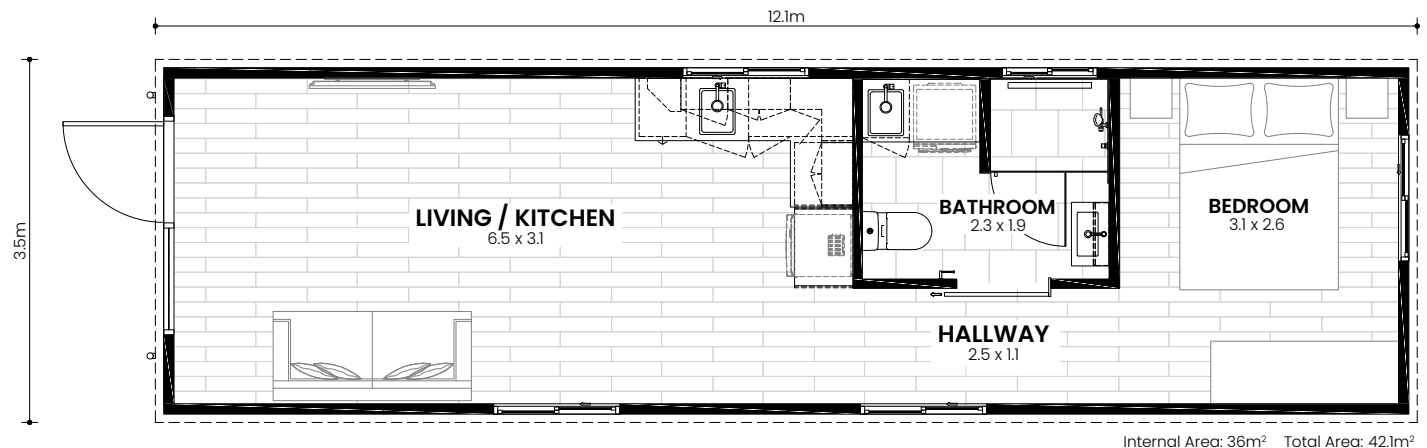
Resort Freedom

1 Bedroom
No Patio XS



Resort Freedom

2 Bedroom
No Patio XL



RESORT ADVANTAGE

Step into the SUCASA® Resort Advantage, where style, comfort, and practicality combine perfectly. Built on a robust cold formed steel frame, featuring a skillion roof now paired with contemporary architectural steel cladding, this home delivers a sleek and modern design that balances form and functionality.

The open-plan living space of this 42-square-metre* home creates an immediate impression of quality paired with open-plan living. High ceilings and large windows flood the space with natural light, while thoughtfully chosen upgrades around every corner. The kitchen showcases elevated living with speckled Lithostone benchtops and soft-close, push-to-open cabinetry that add a sophisticated touch to your daily routine. The bathroom continues this theme of refined comfort, featuring a double-width shower, sleek mirrored vanity with ample storage, and an integrated laundry area that balances practicality, style and time-saving efficiency.

The bedroom provides a peaceful retreat, thoughtfully designed with space for a queen-size bed and bedside tables. Even the placement of premium power points displays our carefully considered approach to everyday living.

The SUCASA® Resort Advantage represents the sweet spot between comfort and sophistication. It strikes the perfect balance for those who appreciate elevated living while maintaining practical value, offering a home that's designed to enhance your everyday life.

*Excludes XS Models



Resort Advantage – 1 Bedroom

ADVANTAGE INCLUSIONS & SPECIFICATIONS

GENERAL

- High-quality cold formed steel frame
- Designed to meet liveable housing design standards
- 7-star energy efficiency
- Off the plan design
- Factory built in Brisbane, Queensland

KITCHEN

- Soft close cabinet doors and drawers
- Integrated multi-function oven
- Slide out rangehood
- Tiled splashbacks
- High-quality Lithostone benchtop
- Countertop induction cooktop
- Chrome hardware

BEDROOM

- Open plan bedroom
- Multiple conveniently placed power outlets
- High-quality white blade ceiling fan included

BATHROOM

- Step free shower with integrated flush shower drain
- Frameless glass shower screen
- Sliding barn door with privacy lock
- Ceiling extractor fan
- Large wall hung storage cabinet with mirror
- Chrome hardware

ADVANTAGE INCLUSIONS & SPECIFICATIONS

LOUNGE

- Open plan design
- Provisions for wall mounted TV (bracing, power & antenna outlets)
- LED ceiling lights
- Premium hybrid timber look flooring
- Multiple conveniently placed power outlets
- High-quality white blade ceiling fan included

LAUNDRY

- High-quality Lithostone benchtop
- Soft close cabinet doors
- Stainless steel sink with gooseneck mixer tap
- Washer and dryer ready
- Chrome hardware

ELECTRICAL

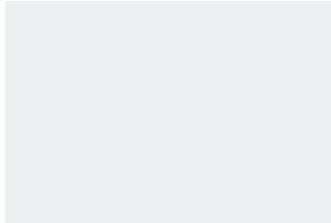
- Pre-wired by licenced electricians
- Interconnected smoke alarms
- LED ceiling lights
- Pre-wired coaxial cable (for wall mounted TV)
- Starlink® external rear power outlet

PATIO

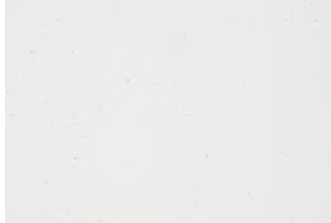
Patio models only.

- Step free glass entry door
- High-quality white blade ceiling fan included
- Full-width hardwood stair entry

ADVANTAGE INTERNAL FINISHES



Walls: Dulux White on White



Stone Benchtop: Australis White



Kitchen Overhead Cabinetry: Maple Nut



Kitchen Base Cabinets: Blackberry



Timber Look Hybrid Flooring: Tassie Oak



Floor Tile: Bora Grey Marle



Wall Tile: Bora Ice White



Drift Tapware: Chrome



Ceiling Fan 1400mm DC Motor: White (LED Where Applicable)



Wall Hung Vanity & Mirror Cabinet: White Ceramic / Oak Prime Woodmatt



Standard Switches & Sockets: White

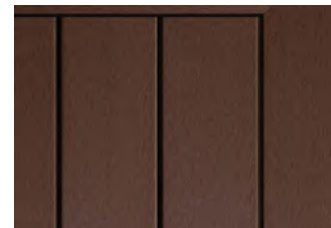
ADVANTAGE EXTERNAL FINISHES



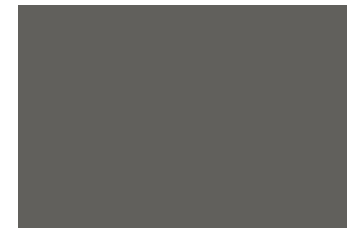
External Cladding: Architectural Steel (Concealed Fixing)



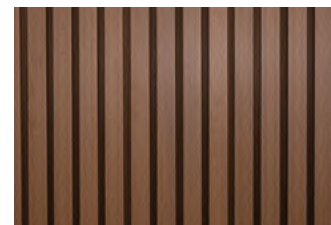
External Cladding Colour: Dune®



Ekodeck Classic Decking - Dark Brown (Patio Only)



Windows & Hoods: Woodland Grey®



Ekodeck Castellated Panels (Patio Only)

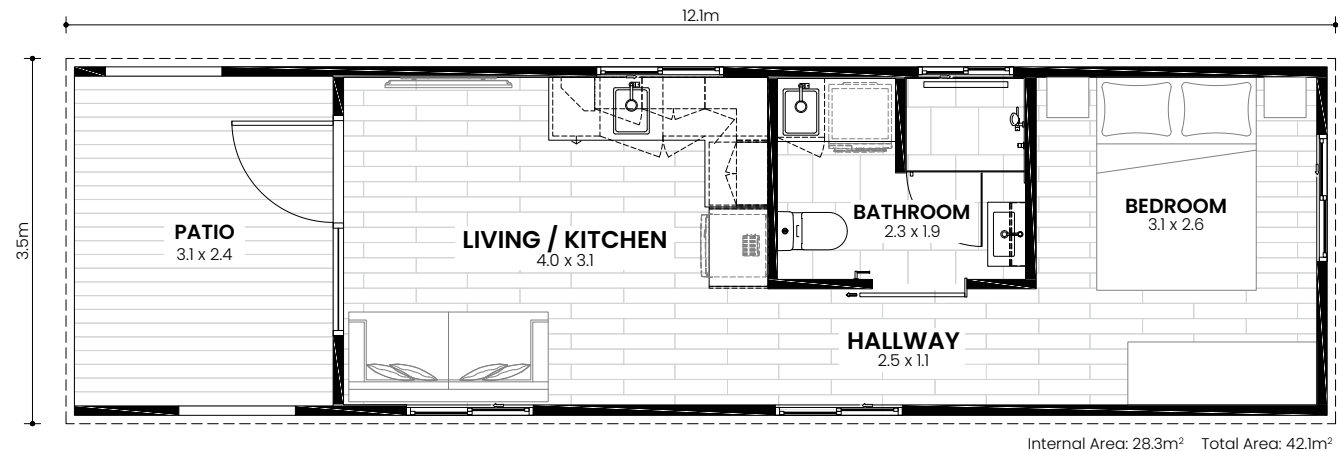


Architectural Steel Roofing (Concealed Fixing)

ADVANTAGE FLOOR PLANS

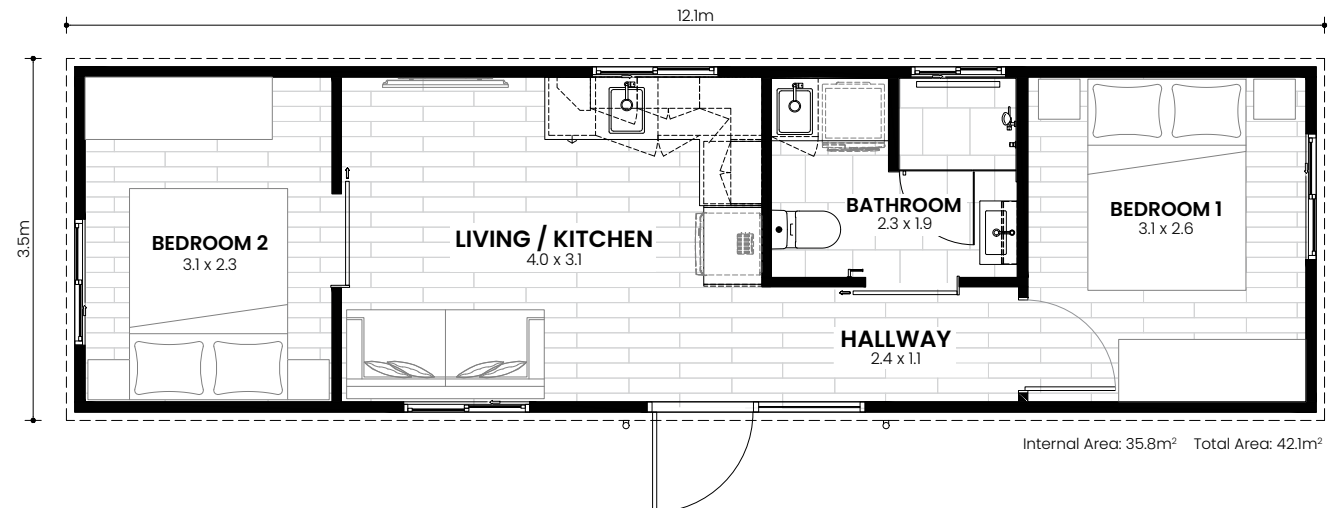
Resort Advantage

1 Bedroom



Resort Advantage

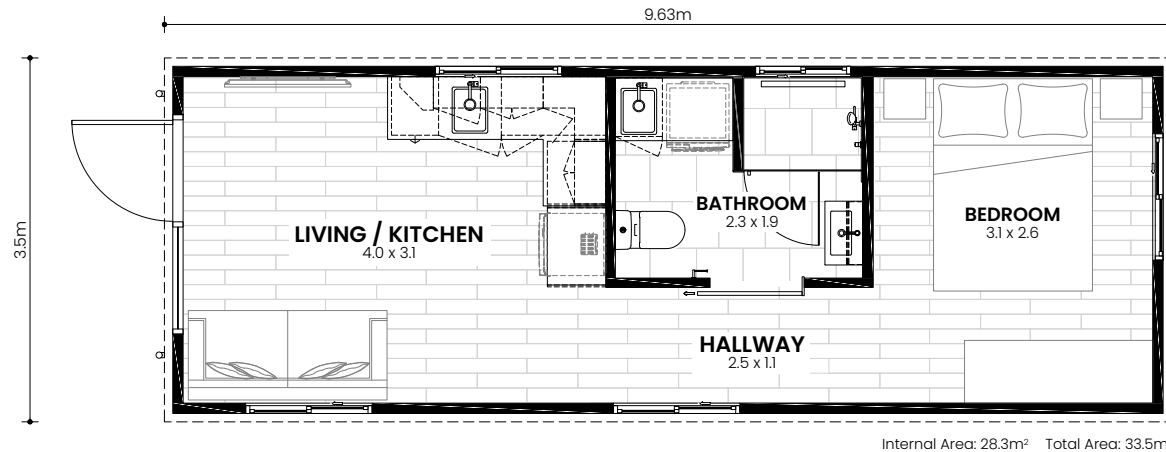
2 Bedroom



ADVANTAGE FLOOR PLANS

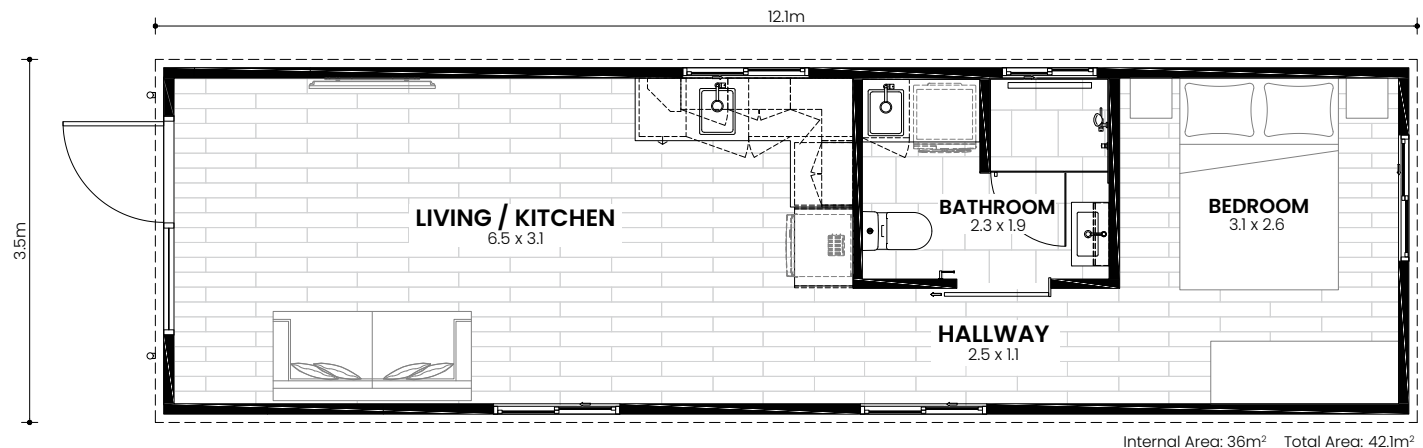
Resort Advantage

1 Bedroom
No Patio XS



Resort Advantage

1 Bedroom
No Patio XL



SUCASA® RESORT RANGE

RESORT PREMIUM

Step into the SUCASA® Resort Premium, the pinnacle of the SUCASA® range. Built on a robust cold formed steel frame, this model builds on everything our customers love about the SUCASA® Resort and elevates it with premium features and sophisticated details, delivering an unmatched living experience.

The standout feature of this 42-square-metre home is its striking offset gable roof, highlighting the homes' bespoke architectural design while delivering a greater sense of openness and space. Stepping onto the designer series patio, beneath the large skylight and timber bladed ceiling fan, you get a true sense of the homes premium, refined feel. Inside the SUCASA® Resort Premium, every space has been carefully designed to elevate daily living. The kitchen showcases premium design, where Caesarstone benchtops and an innovative combi oven/microwave create a sophisticated cooking environment. The bathroom continues this refined experience with elegant matte black fixtures and premium Caesarstone surfaces throughout, from the generous full-width shower to the integrated laundry area. The bedroom provides a peaceful sanctuary, thoughtfully designed with space for a queen-size bed and bedside tables, ensuring every corner reflects our commitment to luxury living.

The SUCASA® Resort Premium is designed for those who love the finer things in life. It offers a living experience that seamlessly blends luxury with practicality and is the perfect choice for those who want to enjoy a smaller footprint, without compromising on a refined lifestyle.



PREMIUM INCLUSIONS & SPECIFICATIONS

GENERAL

- High-quality cold formed steel frame
- Designed to meet livable housing design standards
- 7-star energy efficiency
- Off the plan design
- Factory built in Brisbane, Queensland

KITCHEN

- Soft close cabinet doors and drawers
- Built-in combination oven/grill/microwave
- Slide out rangehood
- Tiled splashbacks
- High-quality Caesarstone® benchtop
- Countertop induction cooktop
- Matte black hardware

BEDROOM

- Open plan bedroom
- Multiple conveniently placed power outlets
- High-quality timber blade ceiling fan included

BATHROOM

- Step free shower with integrated flush shower drain
- Frameless glass shower screen
- Sliding barn door with privacy lock
- Ceiling extractor fan
- Large wall hung storage cabinet with mirror
- Matte black hardware

PREMIUM INCLUSIONS & SPECIFICATIONS

LOUNGE

- Open plan design
- Provisions for wall mounted TV (bracing, power & antenna outlets)
- LED ceiling lights
- Premium Hybrid timber look flooring
- Multiple conveniently placed power outlets
- High-quality timber blade ceiling fan included

LAUNDRY

- High-quality Caesarstone® benchtop
- Soft close cabinet doors
- Stainless steel sink with gooseneck mixer tap
- Washer and dryer ready
- Matte black hardware

ELECTRICAL

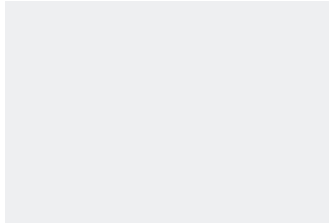
- Pre-wired by licenced electricians
- Interconnected smoke alarms
- LED ceiling lights
- Pre-wired coaxial cable (for wall mounted TV)
- Starlink® external rear power outlet

PATIO

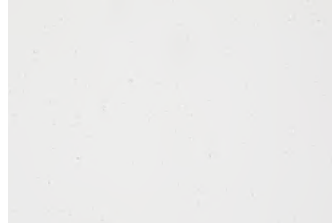
Patio models only.

- Step free glass entry door
- Double glazed fixed skylight
- High-quality timber blade ceiling fan included
- Full-width hardwood stair entry

PREMIUM INTERNAL FINISHES



Walls: Dulux White on White



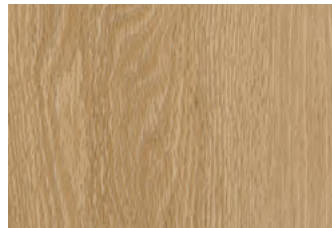
Stone Benchtop: Caesarstone® Intense White



Kitchen & Laundry Overhead Cabinetry: Maple Nut



Kitchen & Laundry Base Cabinets: Blackberry



Timber Look Hybrid Flooring: Tassie Oak



Floor Tile: Bora Grey Marble



Wall & Splashback Tile: Bora Ice White



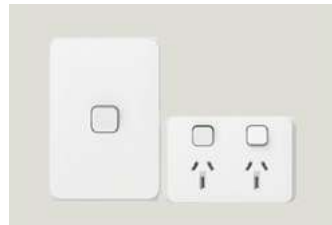
Drift Tapware: Matte Black



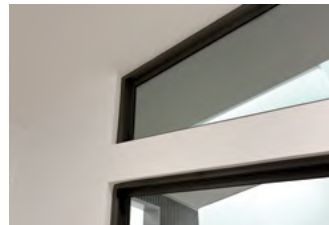
Ceiling Fan 1400mm DC Motor: White/ Timber (LED Where Applicable)



Wall Hung Vanity & Mirror Cabinet: White Ceramic / Oak Prime Woodmatt



Clipsal® Iconic Range Switches & Sockets: White



Offseat Reveal Square Set to Windows & Doors (No Architraves)

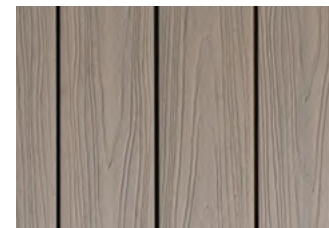
PREMIUM EXTERNAL FINISHES



External Cladding: Architectural Steel (Concealed Fixing)



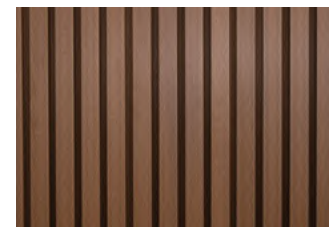
External Cladding Colour: Dune®



Ekodeck Designer Decking: Backbeach (Patio Only)



Windows & Hoods: Woodland Grey®



Ekodeck Castellated Panels (Patio Only)

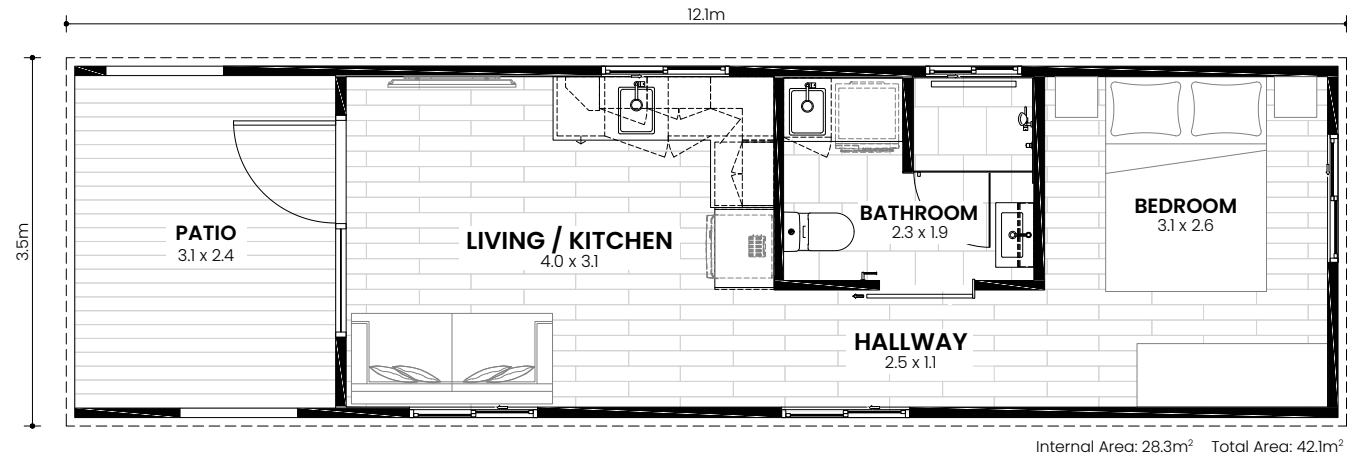


Architectural Steel Roofing (Concealed Fixing)

FREEDOM FLOOR PLANS

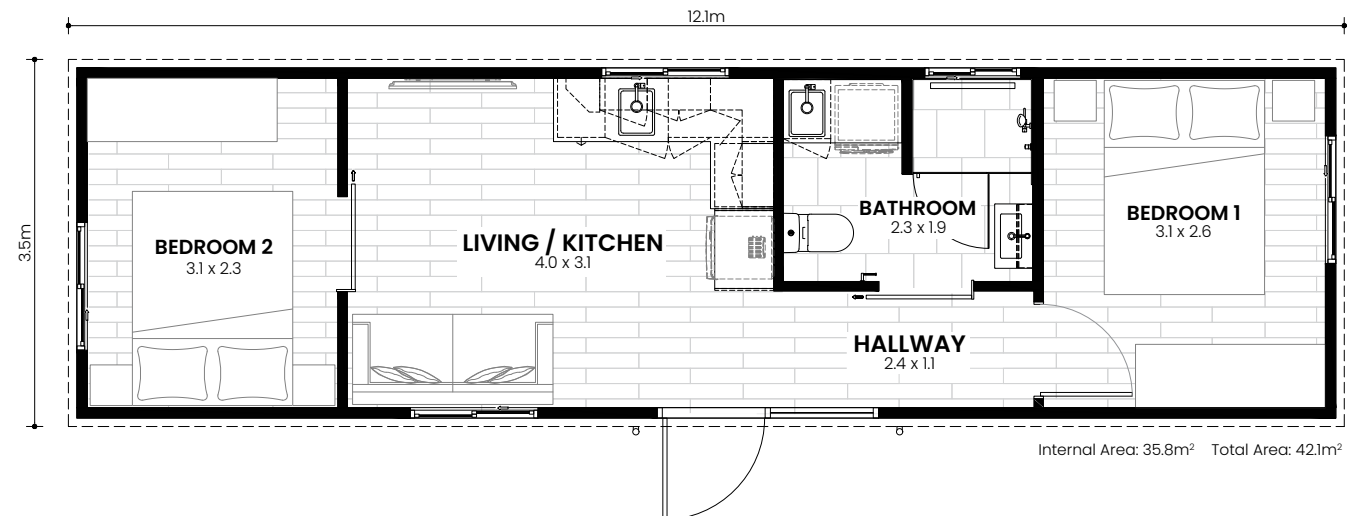
Resort Premium

1 Bedroom



Resort Premium

2 Bedroom



COMPARE THE RANGE

			Freedom	Advantage	Premium
Exterior	Roof - Offset gable designer roofline				●
	Roof - Skillion roofline	●	●		
	Gutter - edge profile	●	●	●	
	Wall cladding - architectural steel		●	●	
	Wall cladding - vertically grooved fibre cement panels	●			
	Awnings - 500mm architectural design	●	●	●	
	Stairs - full width hardwood timber	▲ ¹	▲ ¹	▲ ¹	
	Stairs - 2.1m wide hardwood timber	▲ ²	▲ ²	▲ ²	
	LED down lights - sides of entry stairs/door	●	●	●	
Patio <small>Patio models only.</small>	Skylight - 550 x 1400 double glazed			▲ ¹	
	Wall lining - batten composite panel (timber effect)		▲ ¹	▲ ¹	
	Wall lining - vertically grooved fibre cement panels	▲ ¹			
	Decking - composite designer series (timber effect)			▲ ¹	
	Decking - composite classic series (timber effect)	▲ ¹	▲ ¹		
	Ceiling fan + LED light - 1400mm dc motor, white/timber effect			▲ ¹	
	Ceiling fan + LED light - 1400mm dc motor, white		▲ ¹		
Windows & Doors	Ceiling fan + light - 1400mm, white	▲ ¹			
	Hinged door with side lite and raked high lite (woodland grey®)				●
	Hinged door with side lite only - no high lite (woodland grey®)	●	●		
	Sliding windows, key locked (woodland grey®)	●	●	●	
Lounge	Fly screens - to all sliding windows (woodland grey®)	●	●	●	
	Ceiling fan - 1400mm dc motor, white/timber effect				●
	Ceiling fan - 1400mm dc motor, white		●		
Kitchen	Ceiling fan - 1400mm - white	●			
	Wall mounted power and tv antenna point	●	●	●	
	Benchtop - 20mm thick Caesarstone® - intense white				●
	Benchtop - 20mm thick Lithostone - australis white		●		
	Benchtop - 38mm thick laminate - speckled snow	●			
	Base cabinets - black matte	●	●	●	
	Overhead cabinets - timber effect	●	●	●	
	Stainless steel sink	●	●	●	
	Tapware - gooseneck sink mixer in matte black				●
	Tapware - gooseneck sink mixer in chrome		●		
	Tapware - basic gooseneck sink mixer in chrome	●			
	Oven - 60cm built-in combi oven/microwave				●
	Oven - 60cm multi-function	●	●		
	Cooktop - portable double induction	●	●	●	
	Rangehood - pull-out and ducted externally	●	●	●	
	LED down lights - white	●	●	●	
	LED strip lights - under overhead cabinets				●
			Freedom	Advantage	Premium
Bathroom	Tapware - basin, shower in matte black				●
	Tapware - basin, shower in chrome		●		
	Tapware - basic basin, shower in chrome	●			
	Toilet - soft-close white	●	●	●	
	750mm wall hung vanity - white ceramic top, cabinet timber effect		●	●	
	600mm wall hung vanity - white	●			
	750mm mirror shaving cabinet with bottom shelf - timber effect		●	●	
	600mm mirror shaving cabinet white	●			
	Frameless glass shower screen - black fittings				●
	Frameless glass shower screen - silver fittings	●	●		
Laundry	Benchtop - 20mm thick Caesarstone® intense white				●
	Benchtop - 20mm thick Lithostone australis white		●		
	Benchtop - 38mm thick laminate speckled snow	●			
	Stainless steel sink	●	●	●	
	Tapware - gooseneck sink mixer in matte black				●
	Tapware - gooseneck sink mixer in chrome		●		
	Tapware - basic gooseneck sink mixer in chrome	●			
	Base cabinets - matte black	●	●	●	
	Overhead cabinets - timber effect	●	●	●	
Bedroom	Ceiling fan + LED light - 1400mm dc motor, white/timber effect				●
	Ceiling fan + LED light - 1400mm dc motor, white		●		
	Ceiling fan + LED light - 1400mm, white	●			
Internal	Hinged door with side lite and raked high lite (woodland grey®)		●	●	
	Hinged door with side lite only - no high lite (woodland grey®)				●
	Sliding windows, key locked (woodland grey®)		●		
	Square set ceiling corners	●	●	●	
	Offset reveal square set to windows and doors (no architraves)				●
Flooring	Standard reveals with painted architraves internally	●	●		
	Hybrid plank flooring - 8mm waterproof timber effect	●	●	●	
	Scotia bead skirting - timber effect				●
Switches & Sockets	Clipsal® iconic range switches & sockets				●
	Standard white switches & sockets	●	●		
	Wall mounted power and tv antenna point	●	●	●	

Note: Wind ratings up to N3 included. Additional costs applied for ratings over N3 to a maximum of C1.
▲¹ = One (1) bedroom models only. ▲² = Two (2) bedroom models only.

CONTACT US

PHONE: 1300 046 273
EMAIL: sales@mylittlehouse.com.au
WEBSITE: www.mylittlehouse.com.au
FACEBOOK: facebook.com/mylittlehouseau
INSTAGRAM: instagram.com/mylittlehouseau



[SUCASA® Resort Range - Compare](#)



UNFOLD
TO COMPARE

