

# SPECIFICATIONS

## Portable Office Pod



The My Little House team works closely with our manufacturing partners to ensure that the standard inclusions in the **Portable Office Pod** range offer our customers a quality product at an affordable price. The following information outlines specific product inclusions. For more details on why customers choose My Little House, please contact our friendly team of Sales Representatives, or scan the QR Code below.

## Specifications

### Structural Engineering

- Form 15 with N3 wind rating compliance\* available on request – additional charges apply
- \*Form 15 not applicable for Northern Territory

### Electrical Certificate

- Australian Licenced Electrician Test Certificate – Electrical Safety Regulation 2013
- Compliance to AS3000 and AS3001

### Australian Standards Compliant Power & Lighting

- Australian Standards compliant light and power cable installed
- Light and Power cable, Switches and Power points installed
- Australian Standards compliant IP66 rated Electrical Distribution Board fitted
- EDB is fitted with 1 x 2 pole 10amp circuit breaker
- Lighting fixtures, fittings supplied fitted
- Compliance to AS3000 and AS3001

### Council Compliant

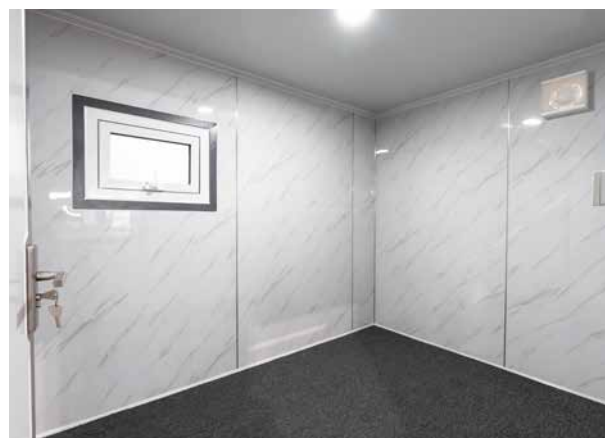
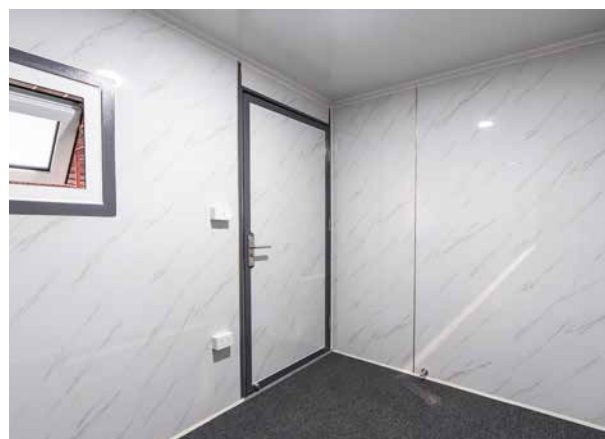
- Electrical Test certificate to AS3000 Compliance
- Engineer's Structural Certification available on request – additional charges apply. This includes:
  - Detailed plans for council submission
  - Engineer footing design available, engineer certification by others

### Equipment Installed

- 4 lifting lugs and forklift pockets for transport
- Vented, key lockable door in steel frame

### Manufacture and Fittings

- Strong shipping container style structure with insulated sides and roof





# SPECIFICATIONS

## Portable Office Pod

### Roof

- Centre section: Top Galvanized Prepainted 3mm Steel Cover + 50mm Glasswool insulation sheeted both side with .4mm Colour bond Steel Sheet
- Main roof: 50 mm Glasswool insulation sheeted both side with .4mm Colour bond Steel Sheet
- Roof is sealed and protected steel sheet

### Window and Door

- Double glazed window and Solid lockable door

### Floor

- Full Carpeted Floors

### Installation

- Place on level ground and connect to services
- 4 adjustable feet to level the building

### Footing Options

- Concrete slab or pads, Compacted ground, or Concrete or Steel stumps
- **Note:** Finished height of surface must be level. Consulting a qualified person is recommended.



## Key Features

- Strong thermally insulated walls and roofs
- Australian compliant electrical
- Double-glazed insulated windows and doors
- Fast on-site assembly
- Structurally Certified to N3
- Full Carpeted Floors
- Industry leading 3-year structural warranty\*

Terms & conditions apply.

## Dimensions

Length	Width	Height	Weight
3.0m	2.2m	2.45m	950kg

External Area	6.6m <sup>2</sup>
---------------	-------------------

### Disclaimer:

\*The My Little House range of relocatable homes are designed and sold to be mounted on an ADR approved trailer for use as a registerable caravan and not sold as Class 1A Buildings.

\*Images may differ from actual product and are subject to change.



Scan  
to find  
out more.



[mylittlehouse.com.au](http://mylittlehouse.com.au)



[contact@mylittlehouse.com.au](mailto:contact@mylittlehouse.com.au)



1300 046 273